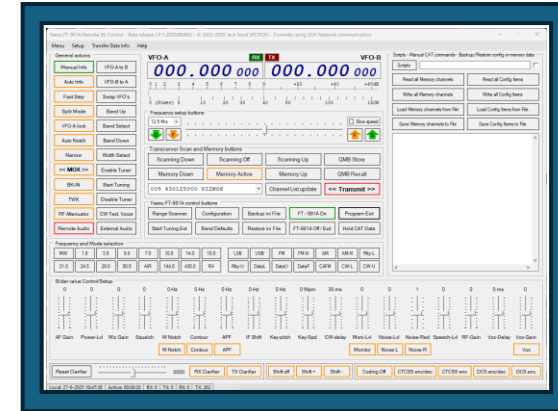


Most simple setup - Transceiver + local PC



USB cable used for CAT and Audio



Local PC requirements

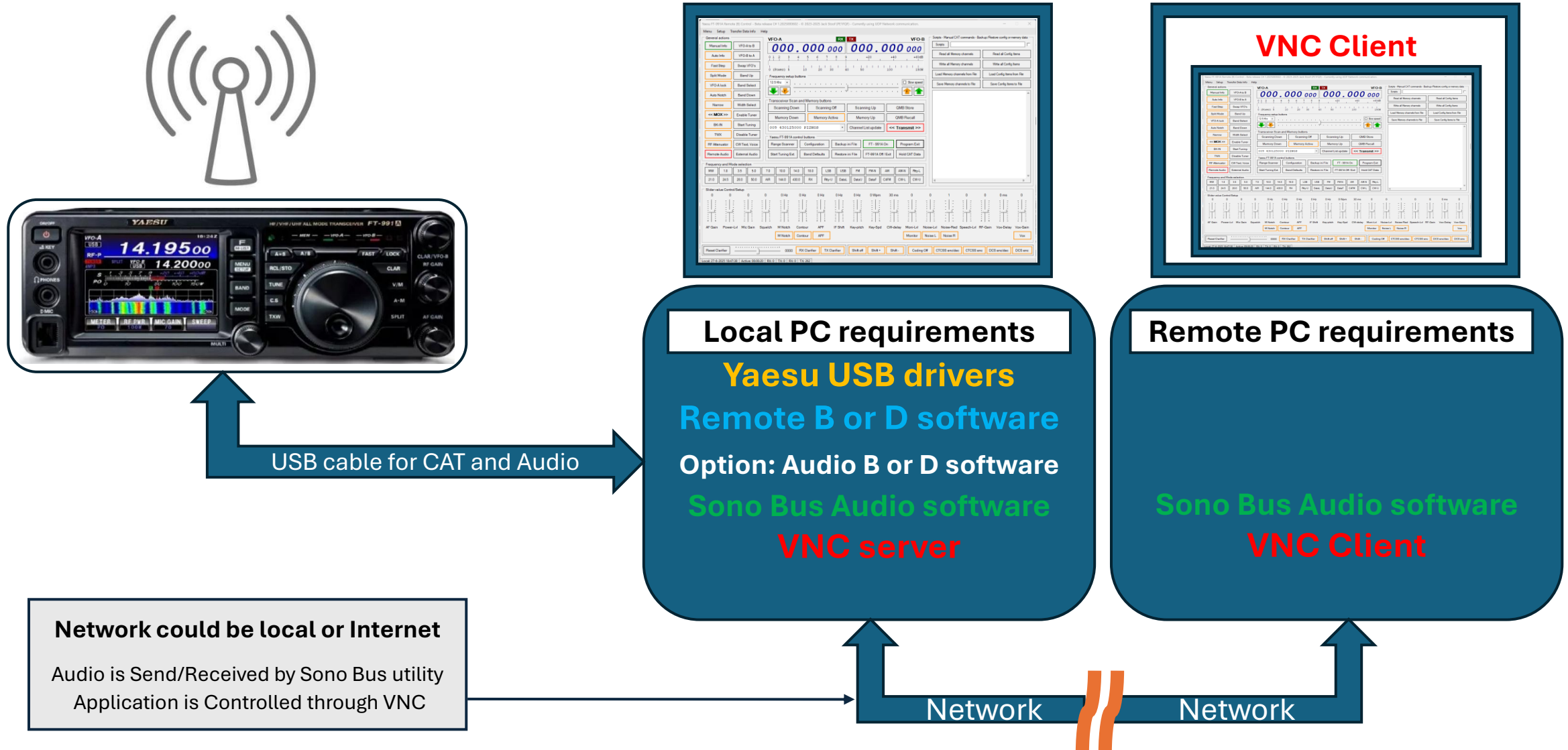
Yaesu USB drivers

Remote B or D software

Option: Audio B or D software

More complex setup - Transceiver + Local PC + Network + Remote PC

Recommended on the local network only – Internet could work but is not tested.

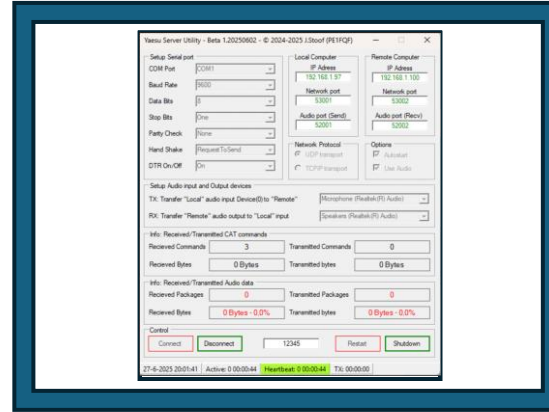


Complex remote setup - Transceiver + local PC + Network + Remote PC

Recommended to be used on Internet connections – It is tested, and it works

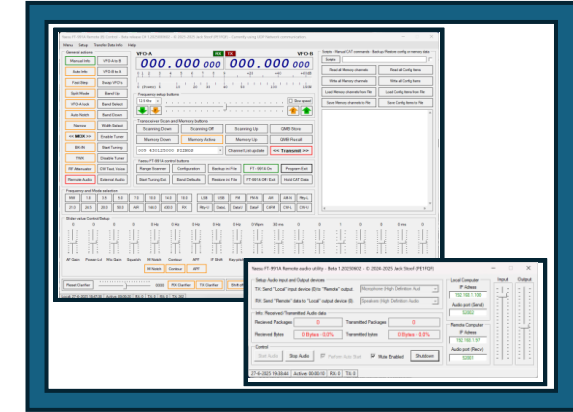


USB cable for CAT and Audio



Local PC requirements

Yaesu USB drivers
SerialServer software



Remote PC requirements

Remote B or D software
Remote Audio software

Network could be local or Internet

Cat command control uses UDP or TCP/IP
Audio always use UDP Packages

Network

Network